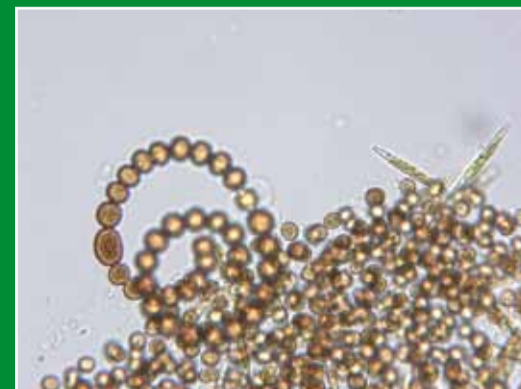


Biogeochemical processes in Wetlands

14 April 2010
 symposium

- 9.00 Registration
- 10.00 Word of Welcome by the chair of the CWE
Jos Verhoeven
- 10.15 **Karsten Kalbitz** - Dynamics of dissolved organic matter after peatland restoration
University of Amsterdam
- 10.45 **Erik Struyf** - Silica: An essential nutrient in wetland biogeochemistry
University of Antwerp
- 11.15 **Break**
- 11.45 **Mike Jetten** - Anammox in wetlands
Radboud University Nijmegen
- 12.15 **Mariet Hefting** - Decomposition, temperature and eutrophication - *Utrecht University*
- 12.45 **Lunch**
- 14.00 **Peter Spierenburg** - CO₂ in softwater lakes
Radboud University and Utrecht University
- 14.30 **Lucas Stal** - Diatom biofilms and sediment stabilization - *NIOO*
- 15.00 CWE fase 3, a scientific network
- 15.30 **Get together with drinks**

Location: Utrecht, Wentbuilding, Sorbonnelaan 16, Lecture Hall Blue



Registration fee: Registration fee: 15,- Should be paid cash at the day itself

Participants need to register at: J.m.sarneel@uu.nl

The CWE is a network of fundamental science groups in universities and academic research institutes on all aspects of wetland science. It aims at enhancing the interaction between the worlds of fundamental research and management implementation regarding wetlands and water bodies.



UNIVERSITY OF AMSTERDAM

Radboud University Nijmegen



Universiteit Utrecht

